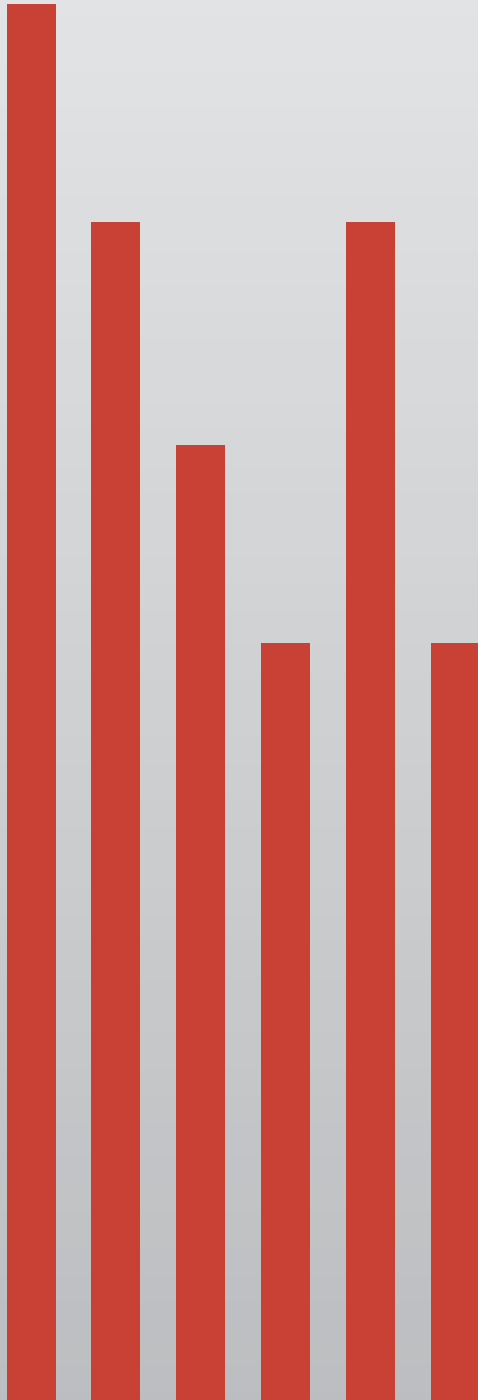
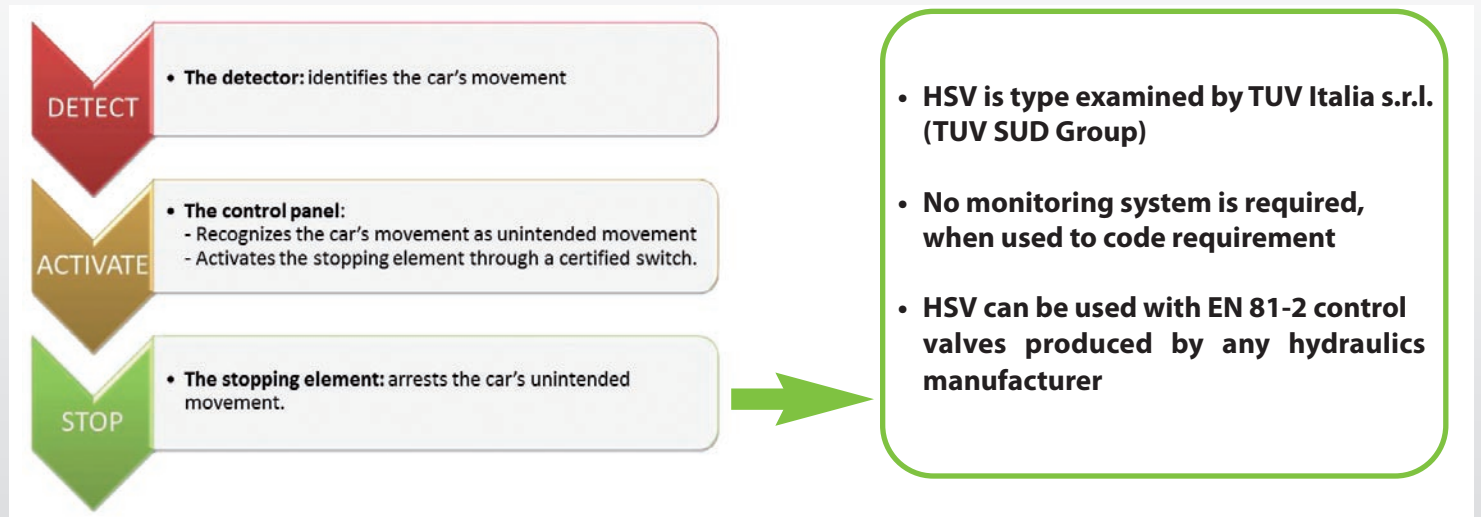


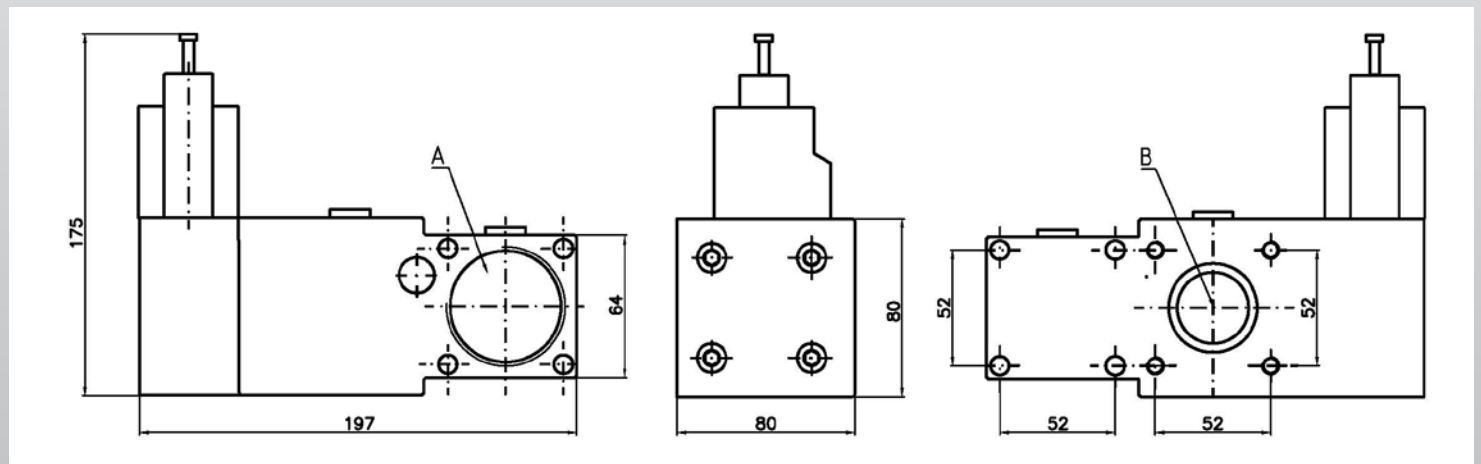
H S V S A F E T Y V A L V E



The HSV safety valve is a component of the unintended car movement safety system in down direction according to EN 81-2:1998 + A3:2009. It operates as stopping element in a safety system like the following.



The HSV Safety Valve is an electrically pilot operated check valve for hydraulic lifts. Installed between the cylinder and the lift valve it enables the oil flow from the lift valve A to the cylinder B during travel up and doesn't allow the flow in opposite direction (from B to A) until the pilot valve 12: A is energized.



	HSV-150	HSV-440
Flow range [L/min]	50 ÷ 150	150 ÷ 440
Static pressure range [bar]	10 ÷ 50	10 ÷ 50
Pressure drop A to B [bar]	< 1	< 3,7
Pressure drop B to A [bar]	< 1,5	< 5
Viscosity range [cSt]	25 ÷ 200	25 ÷ 200
Temperature range [°C]	+ 5°C ÷ + 60°C	+ 5°C ÷ + 60°C
Fluid	Hydraulic Oil	Hydraulic Oil

Options:

- With electrical emergency lowering 12VDC or 24 VDC
- With shut off valve or male gas porting

Combination of the HSV safety valve with a detecting component and an actuating component, which are subject to individual approvals will constitute the complete protection, means that fulfills the requirements of a safety component according to EN81-2:1998 + A3:2009, para 9.13. Ask Hydronic Lift for a complete approved kit solution.



Hydronic Lift S.p.A.

Via per Cadrezzate, 21/C4 - 21020 Brebbia (VA), Italy
 Tel. +39 0332 773134 - Fax +39 0332 773157
 hydronic@hydroniclift.it www.hydroniclift.it

